



COLONY PLAZA SHOPPING CENTER

7800 Shawnee Mission Parkway, Overland Park, KS



LEASE RATE: \$16/SF NNN | 850-1,000-1,650-4,000 SF SPACES

DEMOGRAPHICS

	1 mile	3 miles	5 miles
Estimated Population	7,364	99,473	251,699
Avg. Household Income	\$99,350	\$110,090	\$129,383

- Small retail/office spaces for lease
- Located on the north side of Shawnee Mission Parkway between I-35 and Metcalf
- Shawnee Mission Parkway carries or 36,000 cars per day
- Easily accessible to Interstate 35
- Exceptional visibility and signage to Shawnee Mission Parkway
- Parking ratio of 6.9/1,000 - updated exterior in 2002
- Curb cut directly off Shawnee Mission Parkway



CLICK HERE TO VIEW MORE LISTING INFORMATION

For More Information Contact:

DAKOTA GRIZZLE | 816.412.7395 | dgrizzle@blockandco.com

PAUL MASSALI | 816.412.7409 | pmassali@blockandco.com

Exclusive Agents

DRONE PHOTOS

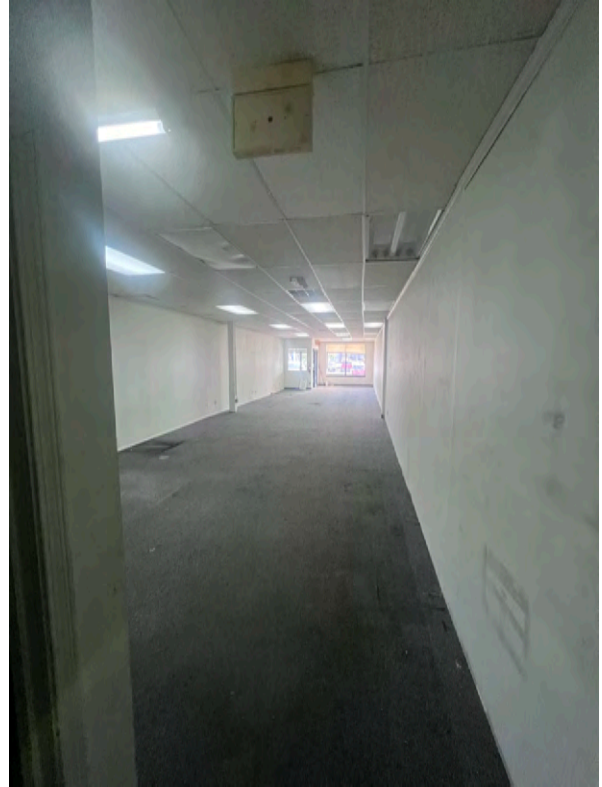




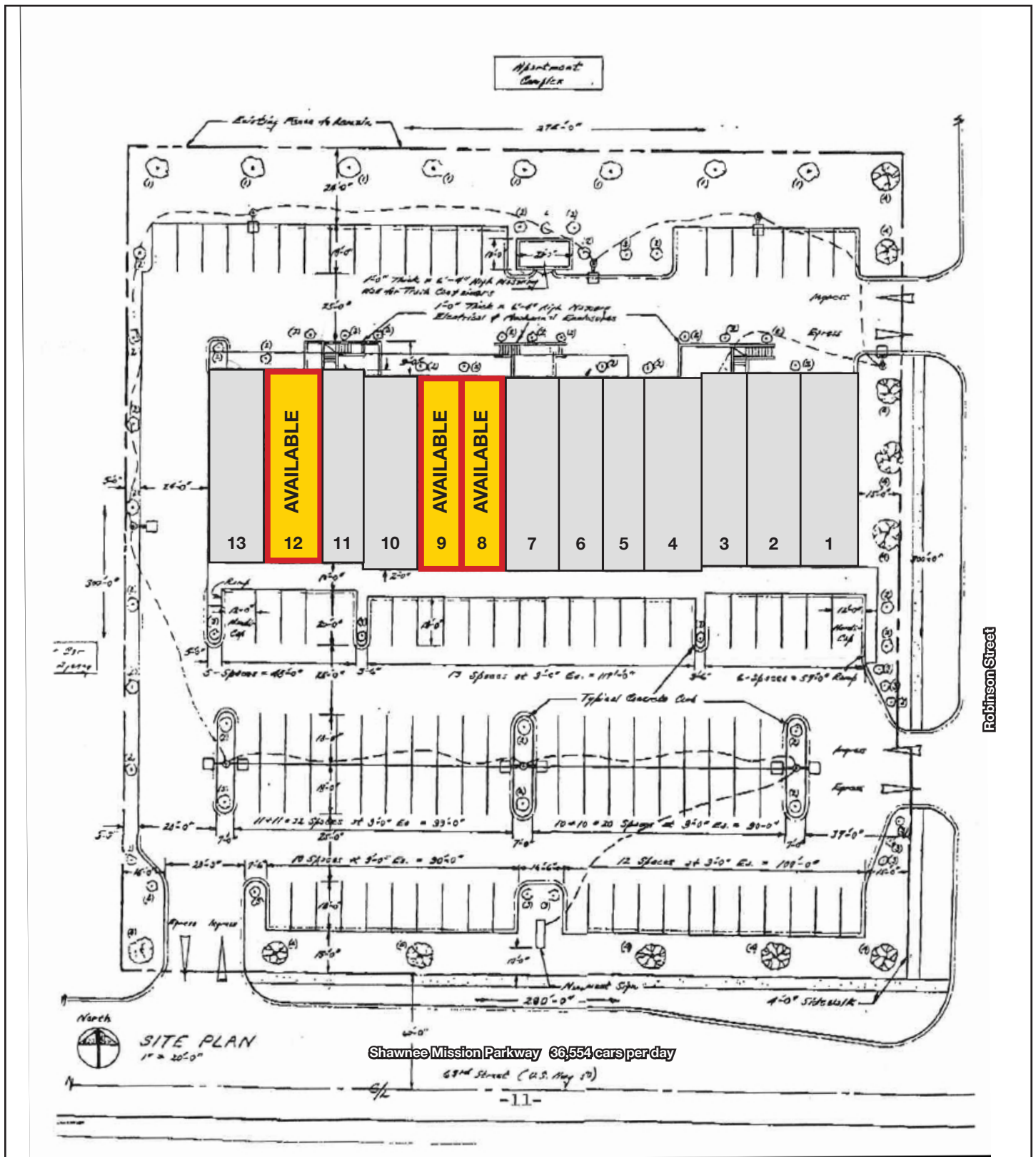
COLONY PLAZA SHOPPING CENTER

7800 Shawnee Mission Parkway, Overland Park, KS

VACANCY PHOTOS



SITE PLAN





COLONY PLAZA SHOPPING CENTER

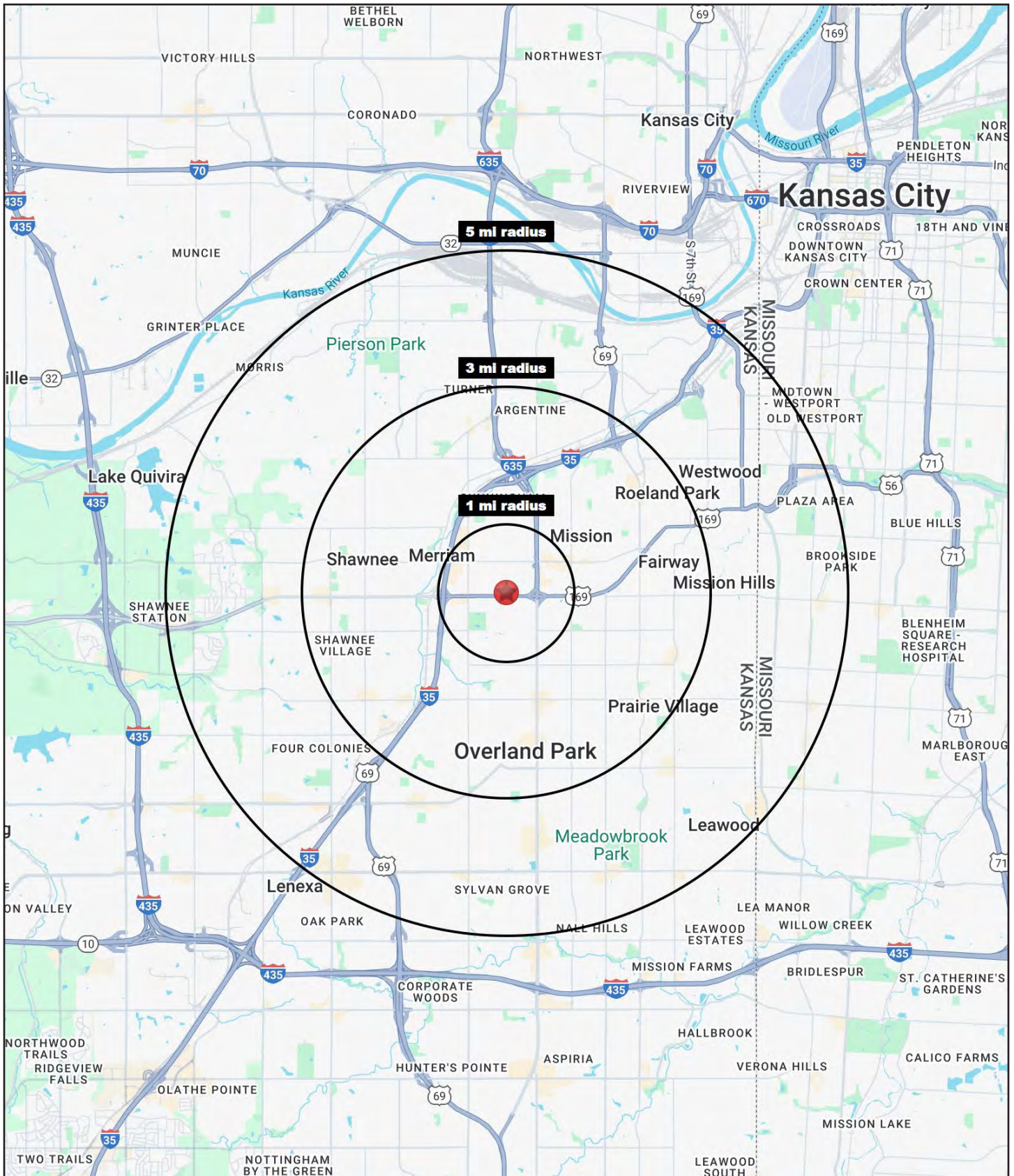
7800 Shawnee Mission Parkway, Overland Park, KS

AERIAL



COLONY PLAZA SHOPPING CENTER

7800 Shawnee Mission Parkway, Overland Park, KS





COLONY PLAZA SHOPPING CENTER

7800 Shawnee Mission Parkway, Overland Park, KS

7800 Shawnee Mission Parkway Overland Park, KS 66202	1 mi radius	3 mi radius	5 mi radius
Population			
2024 Estimated Population	7,364	99,473	251,699
2029 Projected Population	7,381	100,773	253,123
2020 Census Population	7,380	97,630	249,010
2010 Census Population	7,327	95,401	241,330
Projected Annual Growth 2024 to 2029	-	0.3%	0.1%
Historical Annual Growth 2010 to 2024	-	0.3%	0.3%
2024 Median Age	37.2	36.9	38.2
Households			
2024 Estimated Households	3,493	45,719	113,399
2029 Projected Households	3,537	46,801	114,897
2020 Census Households	3,381	43,837	110,171
2010 Census Households	3,304	42,669	106,245
Projected Annual Growth 2024 to 2029	0.2%	0.5%	0.3%
Historical Annual Growth 2010 to 2024	0.4%	0.5%	0.5%
Race and Ethnicity			
2024 Estimated White	80.4%	77.8%	78.2%
2024 Estimated Black or African American	7.0%	6.3%	6.7%
2024 Estimated Asian or Pacific Islander	2.1%	2.9%	3.1%
2024 Estimated American Indian or Native Alaskan	0.2%	0.4%	0.4%
2024 Estimated Other Races	10.3%	12.6%	11.6%
2024 Estimated Hispanic	11.1%	13.6%	12.7%
Income			
2024 Estimated Average Household Income	\$99,350	\$110,090	\$129,383
2024 Estimated Median Household Income	\$81,806	\$87,967	\$98,947
2024 Estimated Per Capita Income	\$47,158	\$50,694	\$58,391
Education (Age 25+)			
2024 Estimated Elementary (Grade Level 0 to 8)	2.4%	2.3%	2.0%
2024 Estimated Some High School (Grade Level 9 to 11)	1.7%	3.0%	2.4%
2024 Estimated High School Graduate	15.7%	18.4%	17.1%
2024 Estimated Some College	23.1%	19.1%	17.9%
2024 Estimated Associates Degree Only	8.3%	8.8%	7.3%
2024 Estimated Bachelors Degree Only	28.5%	30.4%	31.9%
2024 Estimated Graduate Degree	20.3%	18.1%	21.4%
Business			
2024 Estimated Total Businesses	559	3,762	10,854
2024 Estimated Total Employees	10,389	44,228	114,318
2024 Estimated Employee Population per Business	18.6	11.8	10.5
2024 Estimated Residential Population per Business	13.2	26.4	23.2

©2024, Sites USA, Chandler, Arizona, 480-491-1112 Demographic Source: Applied Geographic Solutions 5/2024, TIGER Geography - RS1

